

Brighthandle



Brighthandle is a truly innovative new concept in door furniture design. Created by internationally-renowned Swedish designer Alexander Lervik, Brighthandle is as functional as it is stylish. It is the first ever door handle to communicate using coloured light to display status as well as brightening its surroundings.

With Brighthandle you can turn the normally mundane environment of a cloakroom into a feature that will become a talking point in clubs, bars and hotels.

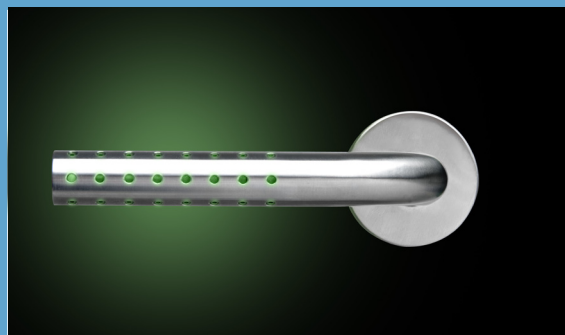
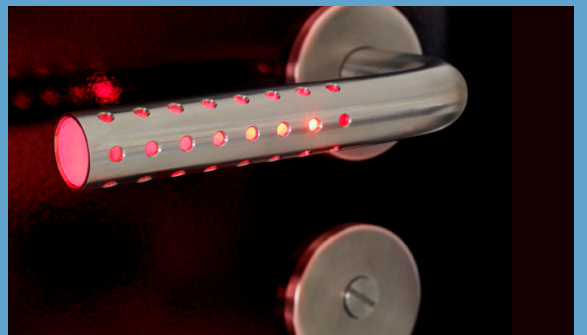
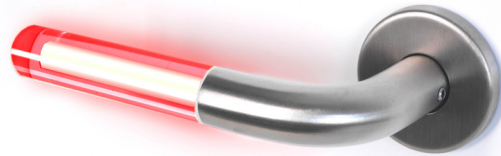


Mains or battery powered

Brighthandle Alfa **Online** is powered by mains electricity which is wired through the door to provide constant colour communication.

When the room is vacant there is a continuous green light on the outside and, when the thumb turn is activated, a red light indicates that the room is occupied

Brighthandle Alfa **Battery** offers the same benefits as Alfa Online, powered by two AA batteries located in the matching Alfa Zero handle. More suited to domestic applications, Alpha battery will add colour and style to any apartment or domestic interior.



Just think of the possibilities for Brighthandle Alfa. It's not just for cloakrooms, but also for conference rooms, dressing rooms, hotel rooms, classrooms, the list is endless.



ASSA ABLOY Baltic AS
Lithuanian Branch Office
Ukmerges st. 427
LT-12107 Vilnius
Lithuania

Tel. +370 5230 0671
Fax +370 5230 0673
www.assaabloy.lt
info@assaabloy.lt

ASSA ABLOY